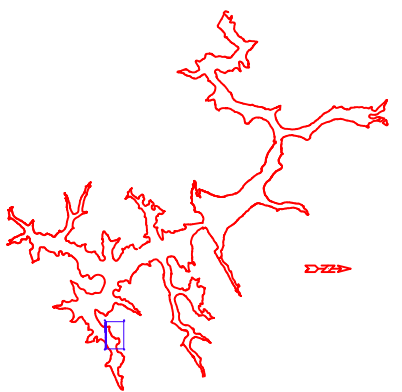


**LEGEND**

- = CONCRETE MONUMENT SET FOUND
- = CONCRETE MONUMENT FOUND
- = MONUMENT LINE
- = 2468 CONTOUR LINE
- = 2482 CONTOUR LINE
- = 2497 CONTOUR LINE
- = 2512 CONTOUR LINE
- LR = LAKE RESIDENTIAL
- TR = TOWN CENTER
- = MONUMENT TO BE SET
- = CALCULATED MONUMENT LOCATIONS THAT CANNOT BE SET
- = 1" REBAR WITH ALUMINUM CAP SET
- = 2" BRASS DISC SET

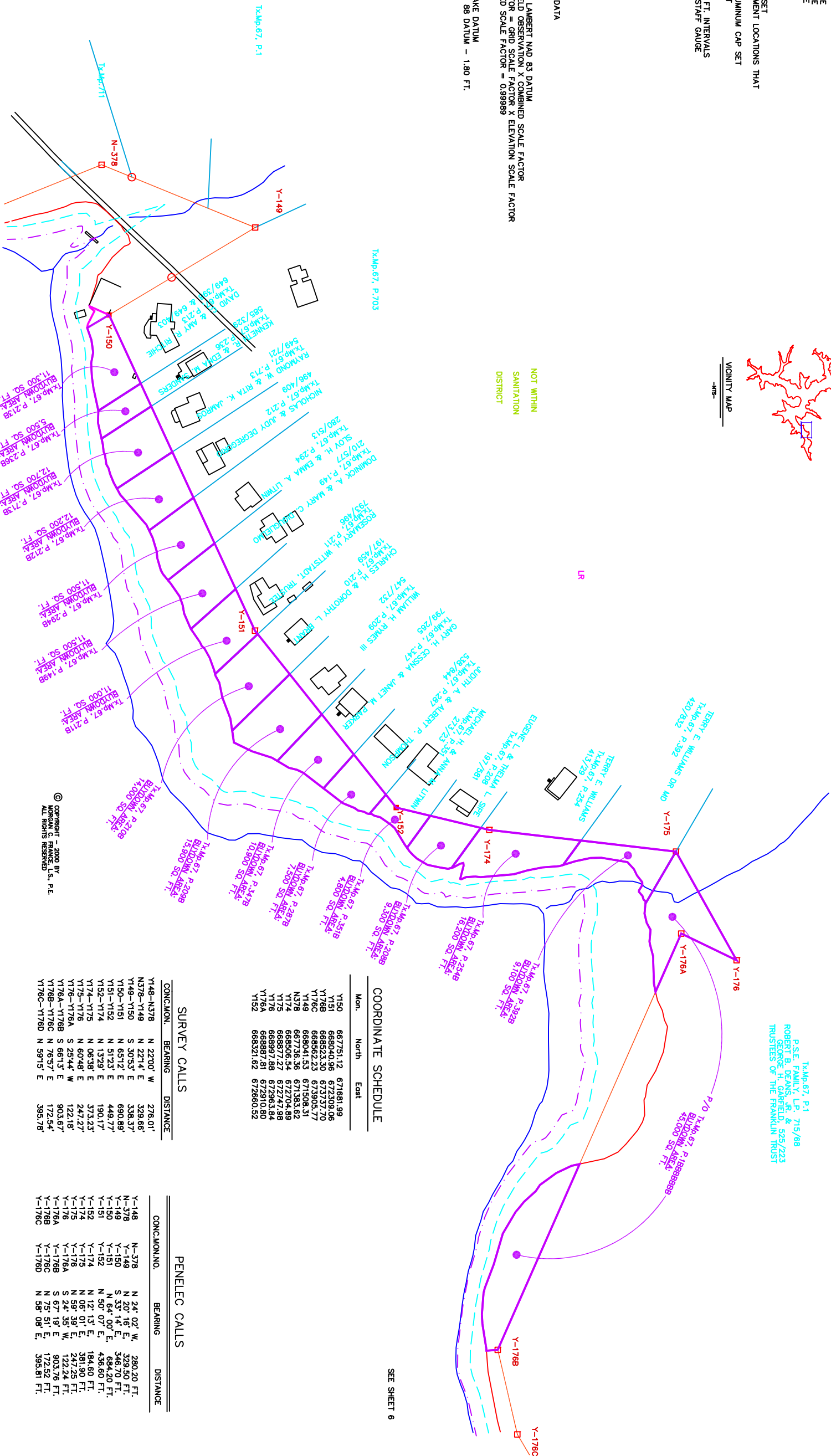
CONTOURS ARE AT 2 FT. INTERVALS  
 REFERENCED TO THE STAFF GAUGE  
 AT THE PENSTOCK.

MONITY MAP  
 -115-



**DEEP CREEK LAKE SURVEY DATA**

1. **HORIZONTAL DATUM**  
 HORIZONTAL DATUM = LAMBERT NAD 83 DATUM  
 NAD 83 DATUM = FIELD OBSERVATION X COMBINED SCALE FACTOR  
 COMBINED SCALE FACTOR = GRID SCALE FACTOR X ELEVATION SCALE FACTOR  
 APPROXIMATE COMBINED SCALE FACTOR = 0.99989
2. **VERTICAL DATUM**  
 VERTICAL DATUM = LAKE DATUM  
 LAKE DATUM = NAVD 88 DATUM - 1.80 FT.



**COORDINATE SCHEDULE**

Mon.	North	East
Y150	667751.12	671681.99
Y151	668040.96	672309.06
Y152	668233.50	673171.70
Y153	668426.04	674034.34
Y154	668618.58	674896.98
Y155	668811.12	675759.62
Y156	669003.66	676622.26
Y157	669196.20	677484.90
Y158	669388.74	678347.54
Y159	669581.28	679210.18
Y160	669773.82	680072.82
Y161	669966.36	680935.46
Y162	670158.90	681798.10
Y163	670351.44	682660.74
Y164	670543.98	683523.38
Y165	670736.52	684386.02
Y166	670929.06	685248.66
Y167	671121.60	686111.30
Y168	671314.14	686973.94
Y169	671506.68	687836.58
Y170	671699.22	688699.22
Y171	671891.76	689561.86
Y172	672084.30	690424.50
Y173	672276.84	691287.14
Y174	672469.38	692149.78
Y175	672661.92	693012.42
Y176	672854.46	693875.06
Y177	673047.00	694737.70
Y178	673239.54	695600.34
Y179	673432.08	696462.98
Y180	673624.62	697325.62
Y181	673817.16	698188.26
Y182	674009.70	699050.90
Y183	674202.24	699913.54
Y184	674394.78	700776.18
Y185	674587.32	701638.82
Y186	674779.86	702501.46
Y187	674972.40	703364.10
Y188	675164.94	704226.74
Y189	675357.48	705089.38
Y190	675550.02	705952.02
Y191	675742.56	706814.66
Y192	675935.10	707677.30
Y193	676127.64	708539.94
Y194	676320.18	709402.58
Y195	676512.72	710265.22
Y196	676705.26	711127.86
Y197	676897.80	711990.50
Y198	677090.34	712853.14
Y199	677282.88	713715.78
Y200	677475.42	714578.42
Y201	677667.96	715441.06
Y202	677860.50	716303.70
Y203	678053.04	717166.34
Y204	678245.58	718028.98
Y205	678438.12	718891.62
Y206	678630.66	719754.26
Y207	678823.20	720616.90
Y208	679015.74	721479.54
Y209	679208.28	722342.18
Y210	679400.82	723204.82
Y211	679593.36	724067.46
Y212	679785.90	724930.10
Y213	679978.44	725792.74
Y214	680170.98	726655.38
Y215	680363.52	727518.02
Y216	680556.06	728380.66
Y217	680748.60	729243.30
Y218	680941.14	730105.94
Y219	681133.68	730968.58
Y220	681326.22	731831.22
Y221	681518.76	732693.86
Y222	681711.30	733556.50
Y223	681903.84	734419.14
Y224	682096.38	735281.78
Y225	682288.92	736144.42
Y226	682481.46	737007.06
Y227	682674.00	737869.70
Y228	682866.54	738732.34
Y229	683059.08	739594.98
Y230	683251.62	740457.62

**SURVEY CALLS**

CONC.MON.	BEARING	DISTANCE
Y148-N378	N 22°00' W	276.01'
N378-Y149	N 22°14' E	329.66'
Y149-Y150	S 30°53' E	338.37'
Y150-Y151	N 65°12' E	690.89'
Y151-Y152	N 51°23' E	449.77'
Y152-Y174	N 13°39' E	190.17'
Y174-Y175	N 08°38' E	373.23'
Y175-Y176	N 06°34' W	247.27'
Y176-Y176B	S 25°14' W	122.18'
Y176B-Y176C	S 66°13' E	903.67'
Y176C-Y176D	N 76°57' E	172.54'
Y176D	N 59°15' E	395.78'

**PENELEC CALLS**

CONC.MON.	BEARING	DISTANCE
Y-148	N 24° 02' W	280.20 FT.
N-378	N 20° 18' E	329.50 FT.
Y-149	S 33° 14' E	348.70 FT.
Y-150	S 64° 00' E	688.20 FT.
Y-151	N 50° 07' E	688.60 FT.
Y-152	N 12° 13' E	184.60 FT.
Y-174	N 08° 38' E	373.23 FT.
Y-175	N 59° 39' E	247.25 FT.
Y-176	S 24° 35' W	122.24 FT.
Y-176A	S 67° 19' E	903.76 FT.
Y-176B	N 75° 51' E	172.52 FT.
Y-176C	N 58° 08' E	395.81 FT.
Y-176D		

SEE SHEET 8

DATE: 6/30/00 at 1:20

APPROVED BY: MORGAN C. FRANCE

PROJECT: DEEP CREEK PROJECT BUY DOWN SURVEY

DRAWING 7, GREEN GLADE COVE

SHEET NO. 7